

BOAT HOUSE BULLETIN®



A Factual Report from Mercury Marine

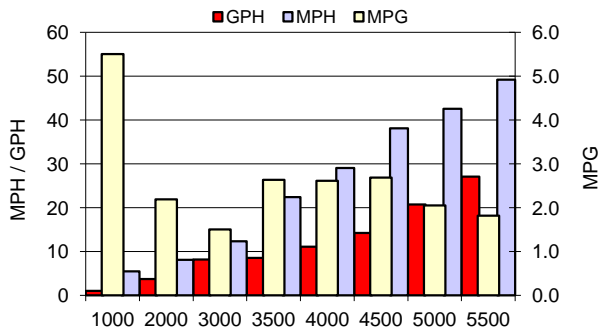
TEST CONDITIONS

Test Date	8/7/2013
Test Conductors	Rohrbeck/Neeley
Boat Weight as Tested (pounds)	
Air Temperature (degrees Fahrenheit)	79
Elevation (feet)	1240
Wind Velocity (MPH)	0-10 MPH
Fresh/Salt Water	Fresh
Fuel Level at Testing (gallons)	30

PERFORMANCE SUMMARY

Top Speed (MPH @ RPM)	56.3
Acceleration 0 - 20 MPH (Seconds)	5.4
Acceleration 0 - 30 MPH (Seconds)	8.3
Best Fuel Efficiency (MPG @ MPH)	

PERFORMANCE CURVE



PERFORMANCE DATA

RPM	SPEED	FUEL	FUEL
RANGE	MPH	GPH	MPG
1000	5.5	1	5.5
2000	8.1	3.7	2.2
3000	12.3	8.2	1.5
3500	22.4	8.5	2.6
4000	29	11.1	2.6
4500	38.1	14.2	2.7
5000	42.5	20.7	2.1
5500	49.2	27.1	1.8
6000	54.3	29.8	1.8
6050	56.3	29.9	1.9

ENGINE SPECIFICATIONS

Engine	Verado 300 XXL
Horsepower	300
Cylinders	6
Gear Ratio	1.85:1
Model Number	1300V33KD

BOAT SPECIFICATIONS

Manufacturer	Warrior
Website	www.warriorboatsinc.com/boat.php?203
Boat Model	V203
Bottom Style/Paint	V Hull
Material	Fiberglass
Length	20'3"
Beam	97"
Transom Height (inches)	30"
Transom Angle (degrees)	
Max HP Capacity	300
Fuel Tank Capacity (gallons)	47
Steering Type	Power
Dry Boat Weight (pounds)	2336
Mounting Bolt Hole (outboard)	

PROPELLER SPECIFICATIONS

Part Number (RightHand)	8M8026820
Part Number (Left Hand)	
Mercury Name	Tempest Plus
Material	Stainless Steel
Diameter/Pitch	22 Pitch
Number of Blades	3
M/C Bravo Three Propeller	
Part Number (Forward)	
Part Number (Rear)	

MERCURY MARINE PO BOX 1939 FOND DU LAC, WISCONSIN 54936-1939

©2012 Mercury Marine, All Rights Reserved. Results on individual boats may vary depending on many factors, including weather and the condition of propeller, lower unit and boat bottom. Boat information based on manufacturer's published specifications.

800-MERCURY MERCURYMARINE.COM